

To access your school work from home you will need to Open Microsoft Internet explorer (this is the only program that will open this remote access session.)

Type or copy and paste the link into the URL bar <https://remote.srwa.woodard.co.uk/rdweb>

You should see this window



The screenshot shows the 'Remote Desktop Services Default Connection' login page. At the top left is a logo with a computer monitor and a green checkmark. The title is 'Remote Desktop Services Default Connection' with the subtitle 'RemoteApp and Desktop Connection'. A 'Help' link is in the top right. Below the title are two input fields: 'Domain\user name:' and 'Password:'. Underneath is a 'Security' section with a '(show explanation)' link and two radio buttons: 'This is a public or shared computer' (selected) and 'This is a private computer'. A 'Sign in' button is to the right. At the bottom, a warning message states: 'To protect against unauthorized access, your RD Web Access session will automatically time out after a period of inactivity. If your session ends, refresh your browser and sign in again.' The footer includes the 'Windows Server 2008 R2' logo on the left and the 'Microsoft' logo on the right.

Type in your school network username with Woodard\ in front of your username, e.g. **Woodard\username**

Then fill in your password.

Click **'sign in'**

You will be then presented with the following page.



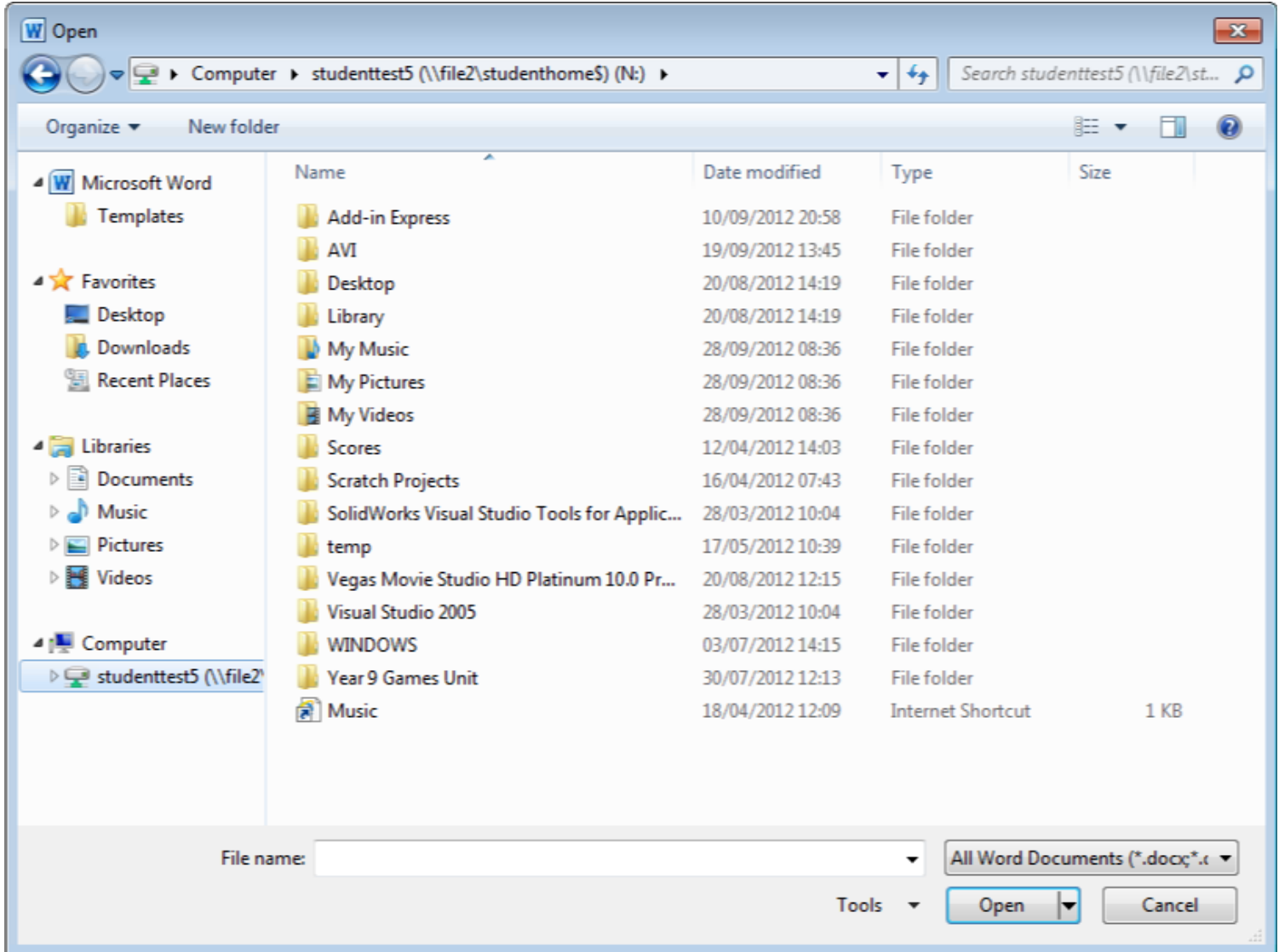
The screenshot shows the main menu of the Remote Desktop Services Default Connection. It features the same logo and title as the login page. Below the title is a 'RemoteApp Programs' section. On the right, there are 'Help' and 'Sign out' links. The programs are displayed in two rows of icons with labels below them: Audacity 1.3 Beta (Unicode), Google SketchUp, I Can Animate 2, Microsoft Access 2010, Microsoft Excel 2010, Microsoft PowerPoint 2010, Microsoft Publisher 2010, Microsoft Word 2010, OpenMind 2.0, Red Herring, TBS Module1, TBS Module1 Spanish, and TBS Module2.

You can now run any of the programs listed but it might ask you for your username and password again in the same format as above.

If you are finishing off some homework open the relevant programme.

PowerPoint for instance , click on **'File'** and then **'Open'**.

You will then be able to see your school drive by scrolling down the menu on the left hand side and navigate through you documents to find the work you have to complete.



Saving is done the same way.

When you have finished working please press the logout button to close the session or the session will close automatically after 15 minutes, this will not save any open work.

There are a limited number of connections that can be supported by the academy's computer system, so please use this responsibly.